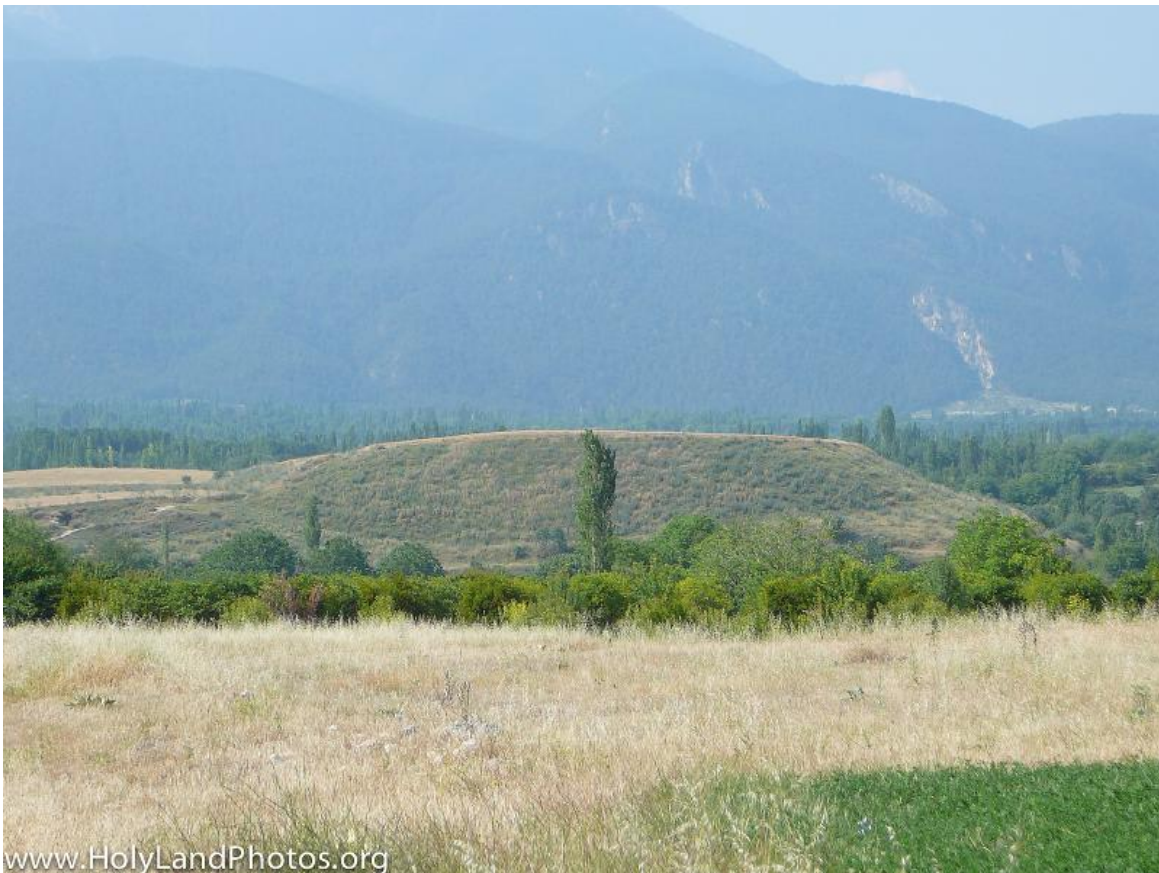


**Colosse**, on the south edge of the Lycus Valley 112 miles east of Ephesus. Trade routes had by-passed Colosse and had instead made Laodecia (8 miles to the west) and Hierapolis (13 miles to the northwest) large, more important and more prosperous.



[www.HolyLandPhotos.org](http://www.HolyLandPhotos.org)

Looking north at the Lycus Valley from the acropolis of Colossae. This valley has several strong streams of fresh water and is fertile and irrigated.



A view of the tel of the remains of the acropolis of Colossae.  
Note the mountains to the south of Colossae and Colossae's position in the Lycus Valley



Remains of an unexcavated small theater or an Odeon.  
This view is looking south while standing on the tel.  
(Map from Generation Word)  
Photos from Carl Rasmussen, holylandphotos.org)